



Coronavirus Disease (COVID-19)

Governor Carney declared a [State of Emergency](#) starting on March 13, 2020, and issued [nine modifications](#).

- On April 1, the Governor [limited gatherings and required new restrictions at businesses](#).
- On March 30, the Governor added [screening requirements for high-risk essential businesses](#).
- On March 30, the Governor made a modification which [allows child care programs in Delaware to be designated as emergency child care sites](#).
- On March 29, the [Governor ordered all out-of-state travelers into Delaware to self-quarantine for 14 days](#).
- On March 22, the [Governor ordered Delawareans to stay-at-home and shelter in place](#), except to leave for essential work or activities.
 - [Read frequently asked questions about stay-at-home order](#).
- On March 22, the [Governor ordered non-essential businesses to close at 8:00 a.m. on Tuesday, March 24](#).

Contact your primary health care provider if you have concerns about

symptoms, particularly those with fever and coughing or shortness of breath.

Individuals with general questions about coronavirus can call DPH at [1-866-408-1899](tel:1-866-408-1899) or email us at DPHCall@delaware.gov. Individuals with hearing impairment can call 7-1-1.

CORONAVIRUS (COVID-19)



DELAWARE HEALTH
AND SOCIAL SERVICES
Division of Public Health

Questions about coronavirus in DE?

**DIVISION OF PUBLIC HEALTH
CALL CENTER**

 **1-866-408-1899**

 **DPHcall@delaware.gov**

Hours of Operation

M-F 8:30 a.m. to 6 p.m.

Sat-Sun 10 a.m. to 4 p.m.

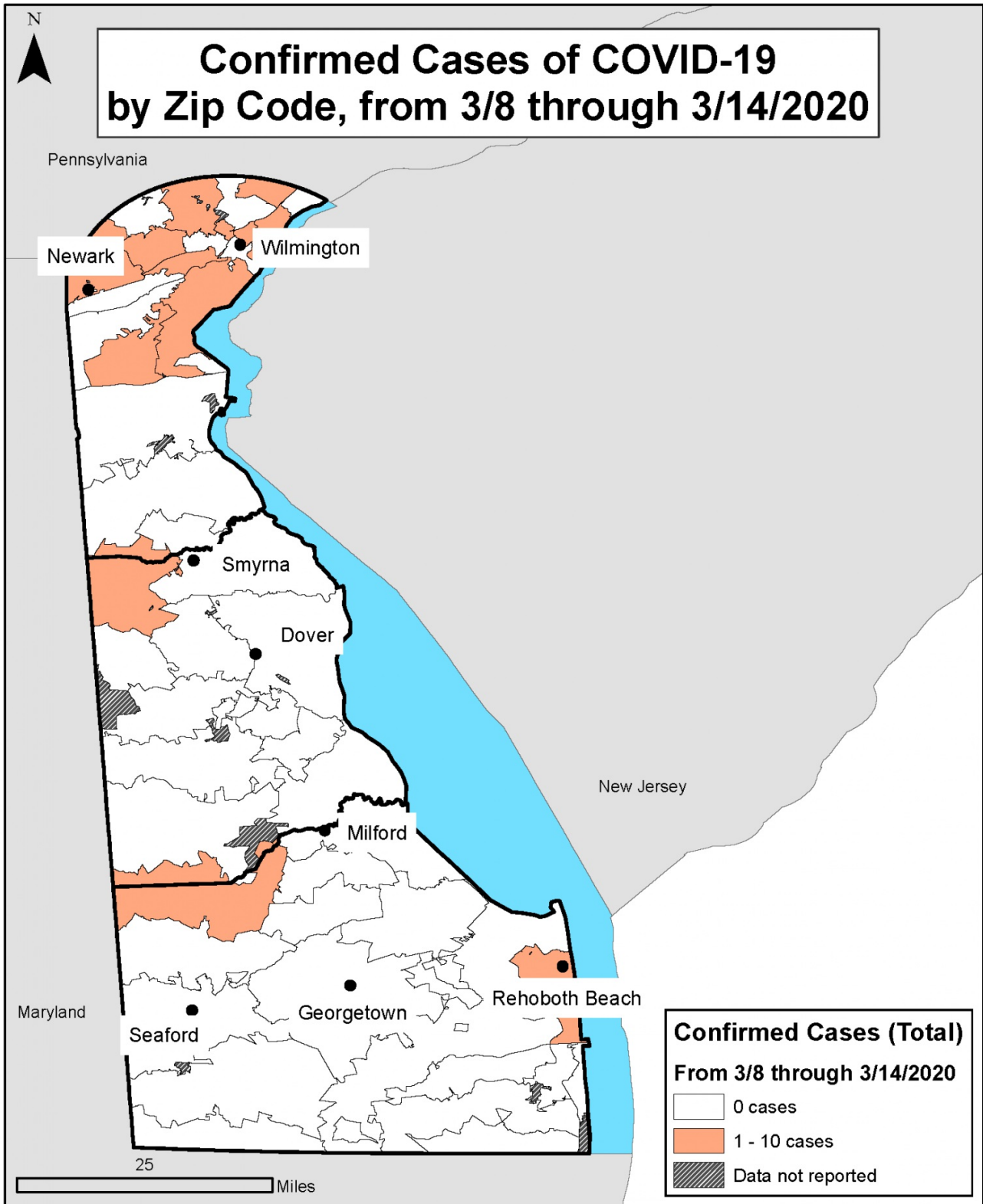
The call center is open to take questions from the public, schools, medical providers, and community organizations.

People with hearing impairments can dial 7-1-1

For the latest Delaware updates:
de.gov/coronavirus

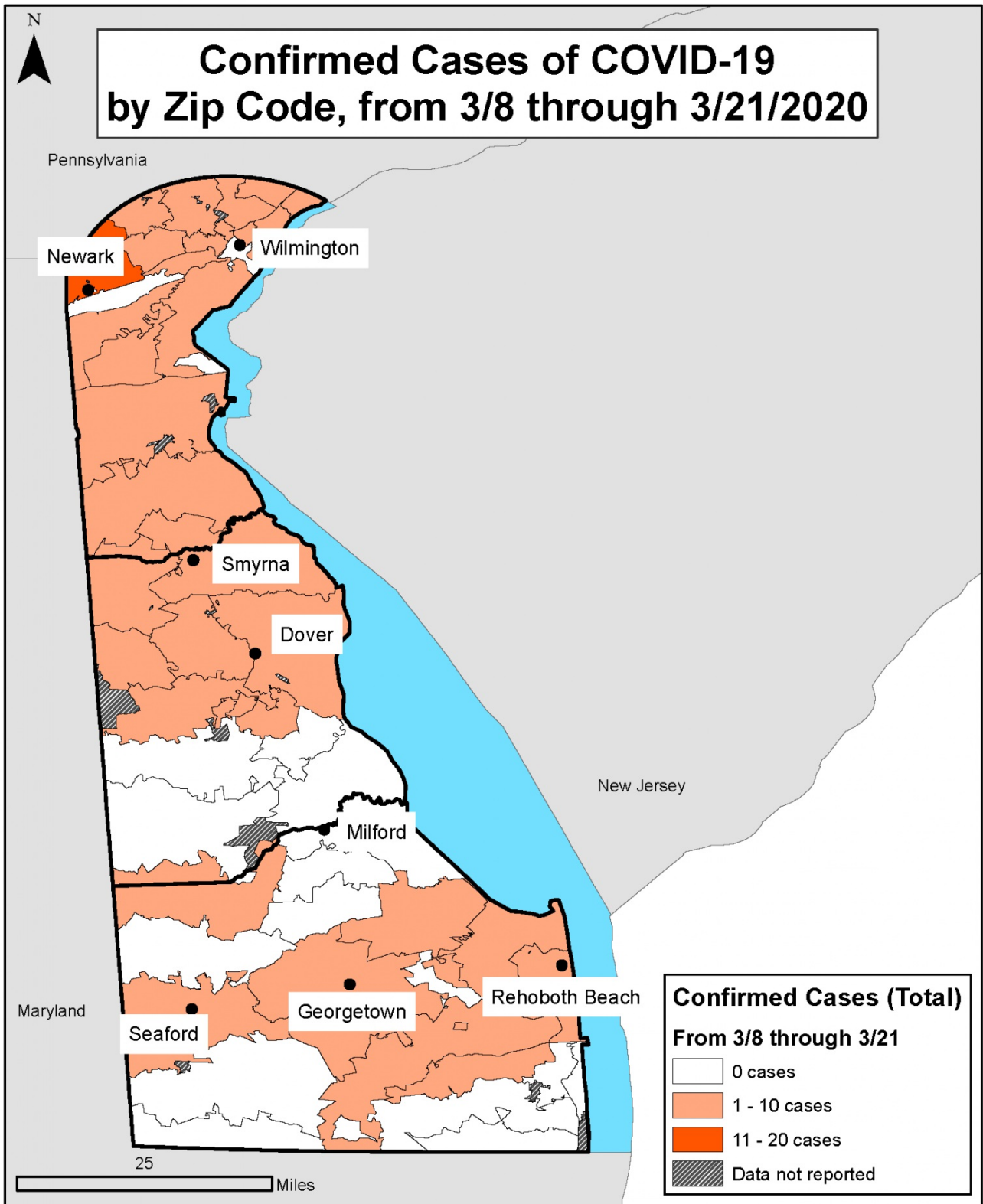
Updated 3/28/20

LATEST DATA



Map created by Delaware Division of Public Health on 3/26/2020.
To protect patient privacy, data not reported for Zip Codes with fewer than 2000 residents.

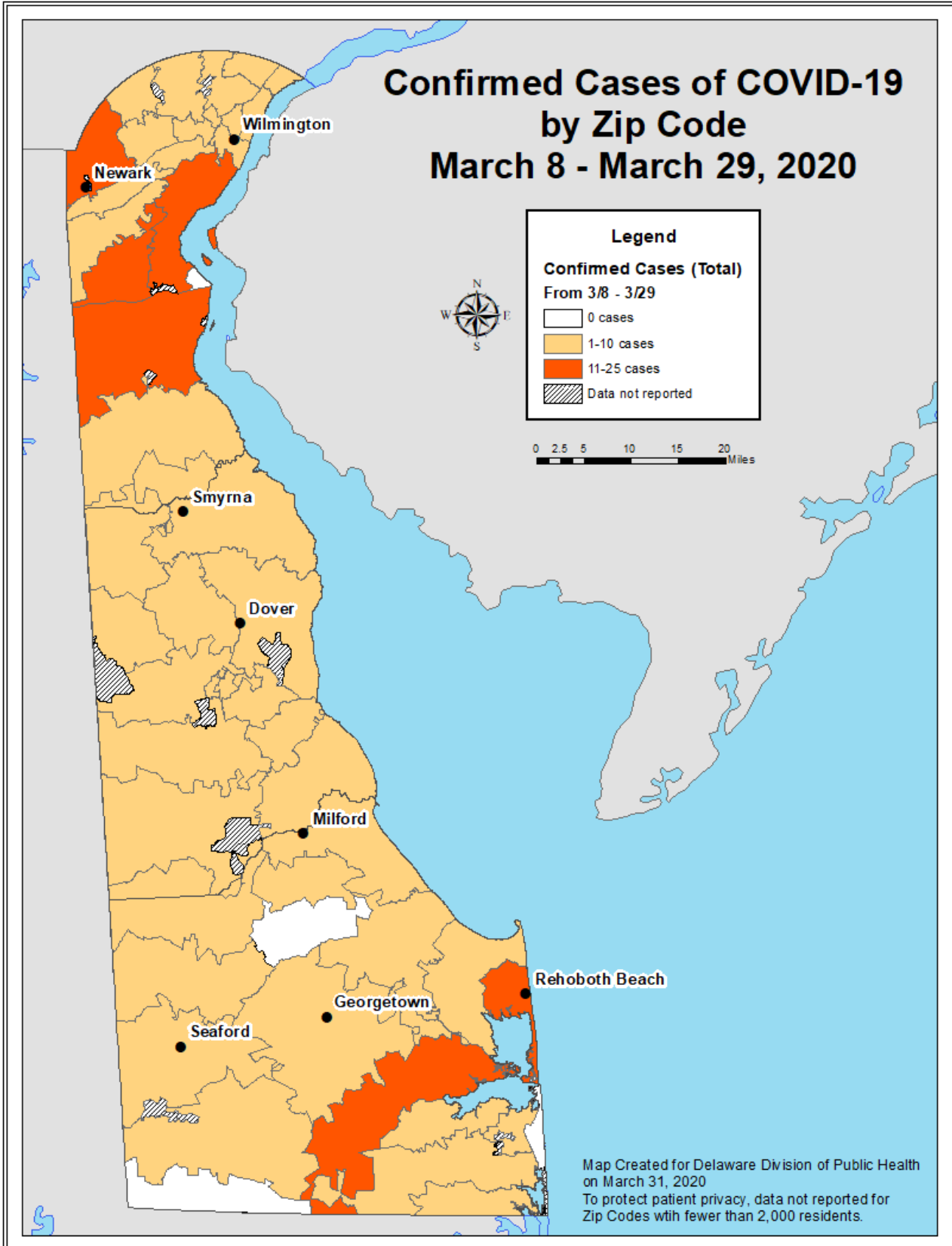
Download the PDF version of this map [here](#)



Map created by Delaware Division of Public Health on 3/26/2020.
To protect patient privacy, data not reported for Zip Codes with fewer than 2000 residents.

Download the PDF version of this map [here](#)

Confirmed Cases of COVID-19 by Zip Code March 8 - March 29, 2020



Download the PDF version of this map [here](#)

COMMUNITY CALL TO ACTION

I CAN HELP WITH SUPPLIES

My business, non profit, or myself can help with supplies the state needs.

[Learn more](#)

I NEED HELP WITH SUPPLIES

I represent a nursing home, emergency child care site, grocery store, pharmacy, or other designated emergency retailer and request supplies.

[Learn more](#)



WHAT YOU CAN DO

Take steps to avoid spreading germs from any respiratory diseases by:

Wash your hands and use hand sanitizer.

Don't touch your face.

Cover your cough with a tissue or your elbow.

Stay home if you are sick.

Get your flu shot.

[FAQ's.](#)

[Learn more](#)



TESTING

To be tested, a referral from your provider is required.

Symptoms include: fever AND cough OR difficulty breathing.

Contact your primary care provider if you have one. Those without a health care provider should call the DPH Call Center at [1-866-408-1899](tel:1-866-408-1899).

[Learn more](#)



COMMUNITY RESOURCES

Whether you're looking for help or to help, find more information about grocery stores, crisis services, food assistance, volunteering, student meal programs, donating, unemployment benefits, and more.

[Learn more](#)

Businesses
Schools
Health Care
Child Care
Vulnerable Populations

OTHER INFORMATION

State of Emergency Declarations

- [View the State of Emergency Declaration and all modifications issued by Governor John Carney.](#)
- [Stay-at-Home Order – Frequently Asked Questions](#)

Health Alert Notifications (HAN)

- [View Delaware Health Alert Notifications for 2020.](#)

Downloadable/Printable Materials

Find information in multiple languages, including English, Spanish, Haitian Creole, and Mandarin.

- Information About Coronavirus Disease 2019 (Risk, Prevention, etc.)
Download: [English](#) [Spanish](#) [Haitian Creole](#) [Mandarin](#)
 - [Information About Self- Monitoring](#)
-

FREQUENTLY ASKED QUESTIONS

What is a novel coronavirus?

What is DPH doing?

How does it spread?

Who is at risk?

What are the symptoms?

[View Full FAQ's](#)

Latest Videos





Learn More About Delaware's Response



[View more videos](#)

Posts from DPH

Press Releases

[Read more](#)

Resources for Coronavirus COVID-19

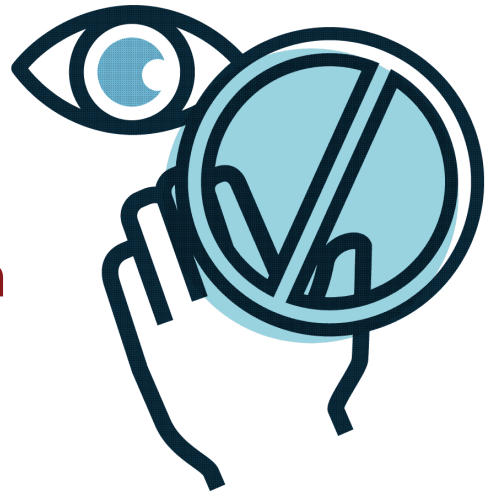
Printable materials, graphics for social media, and mp4 files for sharing

CORONAVIRUS (COVID-19)



DO NOT TOUCH YOUR FACE

Do not touch your face,
eyes, nose, or mouth with
unwashed hands.



de.gov/coronavirus

CORONAVIRUS (COVID-19)



STAY HOME WHEN YOU ARE SICK

Be safe. If you feel sick, stay home.



de.gov/coronavirus

CORONAVIRUS (COVID-19)



PREVENT THE FLU, GET VACCINATED

Be sure to receive your flu vaccine as soon as possible.



de.gov/coronavirus

CORONAVIRUS (COVID-19)



WASH YOUR HANDS FREQUENTLY

Be sure to wash your hands, including the backs and under your nails, for 20 seconds. Or use alcohol-based hand sanitizer.



de.gov/coronavirus

[View all Graphics](#)

[Youtube](#)



Delaware
Division of Public Health,
Coronavirus Response

- [Contact](#)
- [What Delawareans Can Do](#)
- [Coronavirus News from State Agencies](#)
- [Shareable Graphics](#)
- [Frequently Asked Questions](#)
- [Community Resources](#)
- [Testing](#)
- [Videos & Live Videos](#)

+

Delaware's Government

- [Delaware's Governor](#)
- [State Agencies](#)
- [Elected Officials](#)
- [General Assembly](#)
- [Delaware Courts](#)
- [State Employees](#)
- [Cities & Towns](#)
- [Delaware State Code](#)
- [State Regulations](#)
- [Business First Steps](#)
- [Phone Directory](#)
- [Locations Directory](#)
- [Public Meetings](#)
- [Voting & Elections](#)
- [Transparency](#)
- [Delaware Marketplace](#)
- [Tax Center](#)
- [Personal Income Tax](#)
- [Privacy Policy](#)
- [Weather & Travel](#)
- [Contact Us](#)
- [Corporations](#)
- [Franchise Tax](#)
- [Gross Receipts Tax](#)
- [Withholding Tax](#)
- [Delaware Topics](#)
- [Help Center](#)

[Mobile Apps](#)
[E-mail / Text Alerts](#)
[Social Media](#)

[Facebook Page](#)
[Twitter Feed](#)
[Flickr Feed](#)
[Youtube Account](#)
[Instagram Photos](#)

Make Text Size Smaller

Reset Text Size

Make Text Size Bigger



Built by the [Government Information Center](#)
©MMXX [Delaware.gov](#)